

BELUGA

by
bürotime

technical document




BELUGA




Atilla Kuzu

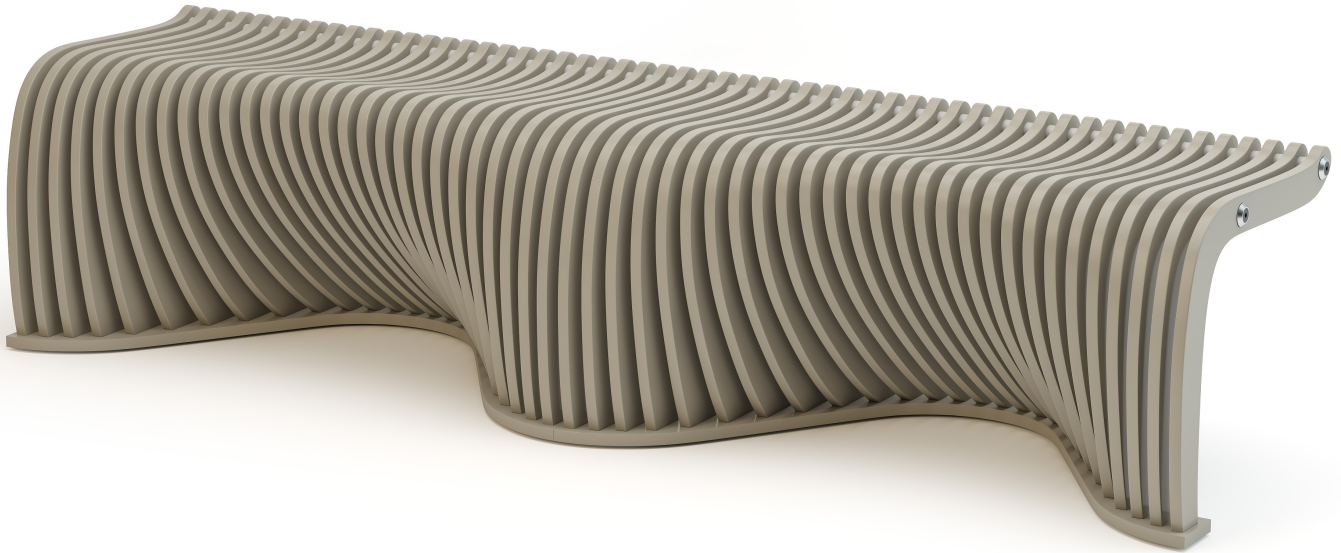
"Beluga; defines the seating function of two individuals as space while providing its self-supporting with the arch forms created by the combination of many trusses' projections on the floor. The inward curves created by the arc forms, which settle on the floor, provide stability of Beluga and enable users to position their legs backward during the seating action. Its design allows it to be positioned in public spaces as well as in private areas. While creating a structure that will support the sitting function ergonomically, it creates a perception of a natural form with its organic appearance."



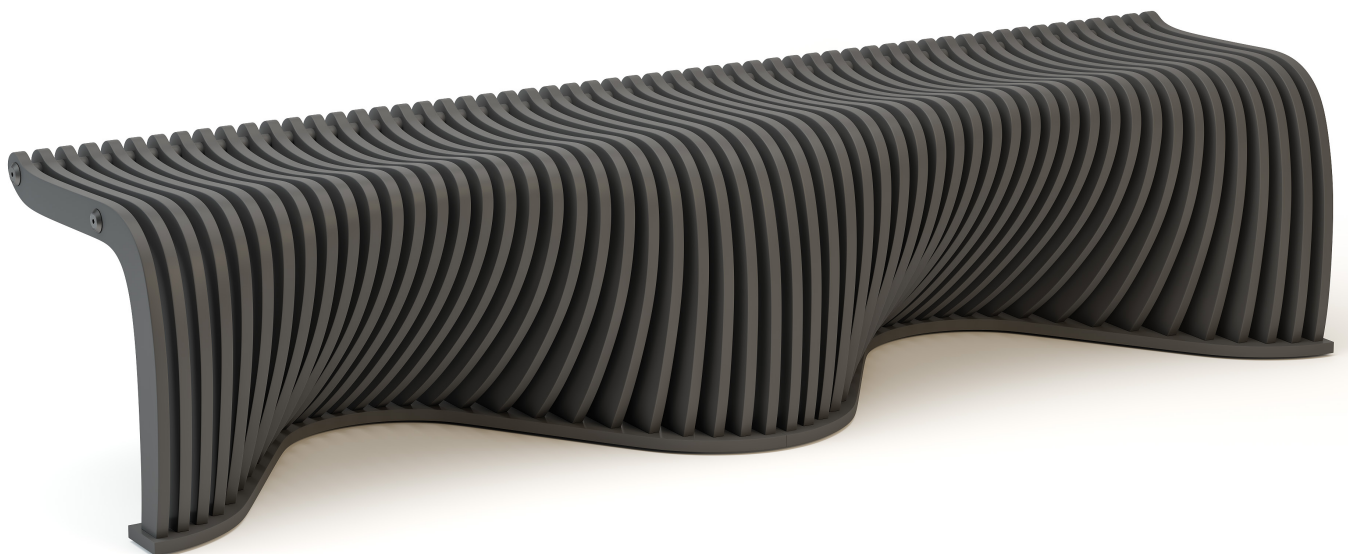
Designed on the basis of ergonomics and robustness; Beluga is a sophisticated lounge furniture that aesthetically maximizes its environment with its innovative style.



Its fluid structure that consists of a combination of many trusses and its curved arch form created on the floor generates the right angle of seating and offers a comfortable seating experience.



With its sculptural structure, Beluga brings a spacious and distinctive atmosphere to the spaces with its identity as a design object rather than ordinary common area furniture. Available in 5 different color options and the possibility of multiple-use; it adopts many spaces ranging from lounges of facilities such as offices, hotels and hospitals to the museums, art galleries, theaters, concert halls, and foyer areas.

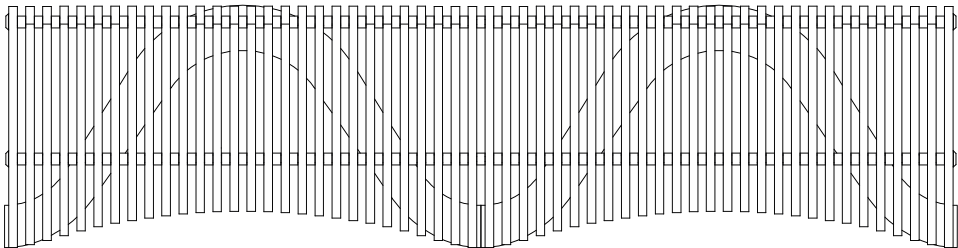
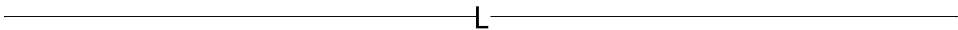
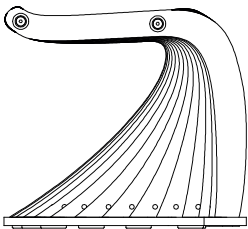
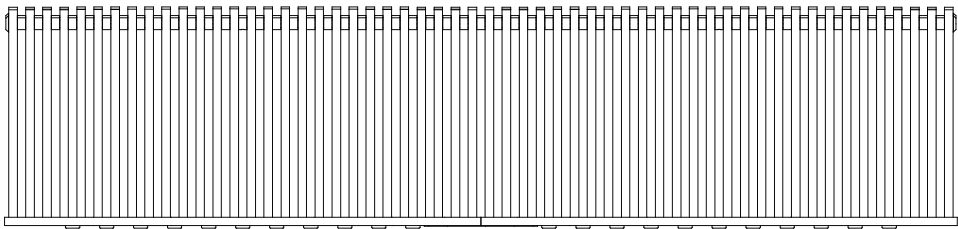
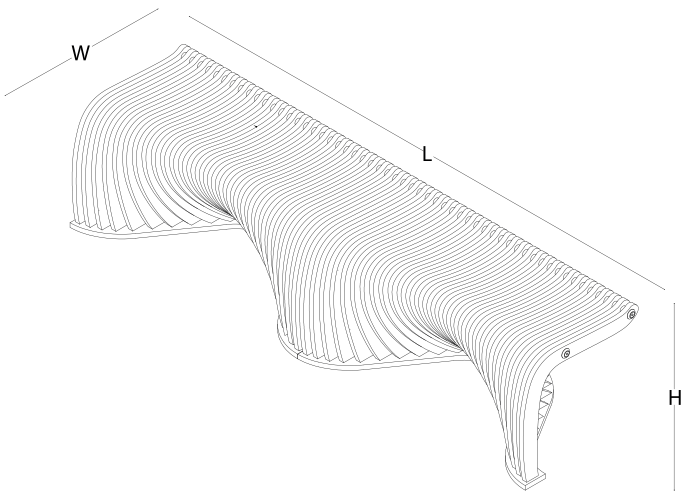


product family _____



size chart _____

H 46,8 W 51,3 L 201,6



color options_____

laquer



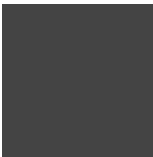
white



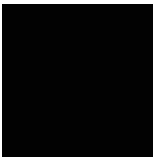
grey



sand



anthracite



black