

# Pedestals SLD - Standard technical specification



**.mdd**

**MDD has a leading position among manufacturers of office furniture with many awards that prove quality and continuously increase demand for its products.**

The realities of today's market require constant quality improvement at all levels of modern organization. This applies in particular to customer service, marketing, quality of products and also to quality of processes within the company.

Partnership relations among employees and with business partners form a base of economic growth and success of the company.

Constant investments in innovative machinery park, optimization of management systems and an expansion of production halls allow to minimize the lead times for the product of the highest quality.

**More than twenty years of experience in office furniture industry come with reference from a long list of companies and institutions to show their appreciation for an efficient and comprehensive service.**

**MDD is highly aware of the environment.**

Being located in the forest region with lake by its side, MDD takes the nature seriously and invests constantly in a modern and energy-efficient solutions to preserve the local life. Company puts emphasis on waste segregation and recycling. MDD has been awarded for the exceptional care and involvement in waste disposal. All materials used are environmentally friendly and enjoy a high 95 % rate of being recycled.



## General informations:

### Warranty:

MDD products – **5 years.**

Electrical components and fabric – **2 years.**

### Certificate - MFC:



### Assembly:

the product comes pre-assembled

### Packing:

cardboard

### Compliant with standards:

PN-EN 14073-2:2006

### Boards density:

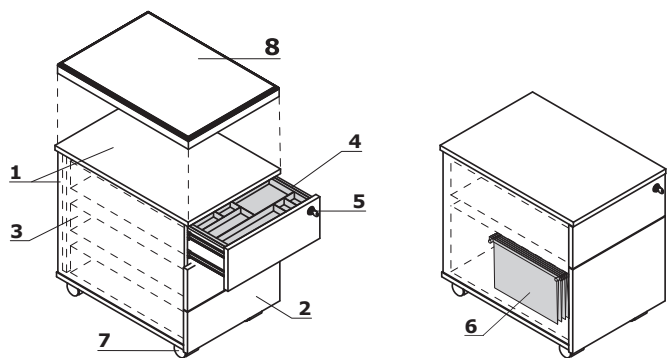
12 mm - 690 - 750 kg/m<sup>3</sup>

18 mm - 650 - 690 kg/m<sup>3</sup>

28 mm - 610 - 630 kg/m<sup>3</sup>

36 mm - 610 - 630 kg/m<sup>3</sup>

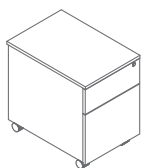
Mobile pedestal without handles



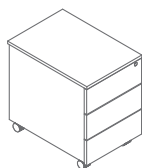
- 1. **Body** - MFC 18 mm, ABS edge
- 2. **Front** - MFC 18 mm, ABS edge
- 3. **Metal drawer** - roll runners, max load 25 kg, 80% extraction, anti-tilt mechanism; OPTION WITH EXTRA CHARGE - ball runners, soft-closing system
- 4. **Pencil tray** - plastic, colour: black
- 5. **Central lock** - foldable key
- 6. **Suspension files drawer** - ball runners, max load 30 kg, 100% extraction, A4 folders must be inserted parallelly to the front
- 7. **Castors** - Ø50 mm, two with brakes
- 8. **Optional cushion SKP13** - for pedestal, max load 120 kg, ordered separately

ATTENTION - sitting on the pedestal possible only after mounting the cushion (SKP13); the pedestal with cushion is intended for sitting only  
 - moving the pedestal while sitting may result in damaging the castors

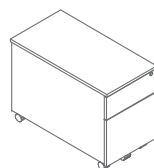
**Mobile pedestal without handles \***



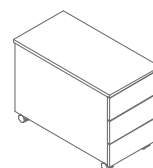
**SLD12**  
416 / 600 / 586  
23 kg



**SLD120**  
416 / 800 / 586  
23 kg

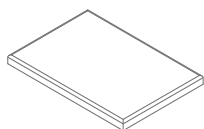


**SLD13**  
416 / 600 / 586  
23 kg



**SLD130**  
416 / 800 / 587  
35 kg

**Pedestal cushion \***



**SKP13**  
400 / 600 / 52  
3 kg

\* dimensions expressed in millimeters: width x depth x height

<b>Pedestals SLD Standard</b>	Date of preparation 21.09.2020	The data contained in this document is valid in the day of its preparation. Change of the product, as long as it does not affect the basic features of it, does not require consistent updates of the document.	page 4/7
			<b>products</b>

## Mobile pedestal without handles



26 Aluminum satinato



67 White pastel



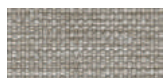
154 Anthracite



08 Black

## SKP13

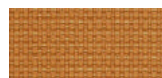
### Fabric Nemo



NE-1 Beige



NE-2 Yellow



NE-3 Orange



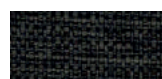
NE-5 Red



NE-9 Green



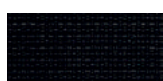
NE-10 Grey



NE-14 Graphite



NE-15 Navy blue



NE-16 Black



NE-17 Blue

#### Technical data:

<b>Material</b>	polyester 100%
<b>Fabric weight</b>	366g/m2
<b>Abrasion resistance rubs</b>	PN-EN ISO 12947 - 2:2 100,000
<b>Pilling resistance</b>	scale 1-8, max. 8, PN-EN ISO 105 - B02 (3-4)
<b>Colour fastness to rubbing</b>	scale 1-5, max. 5, PN-EN 1021 - 2, PN-EN 1021 - 1
<b>Colour fastness to rubbing</b>	skcale 1-5, max. 5, EN ISO 105x12 (wet/dry) 4-5

### Fabric Runner - second price group



R-63034 Orange



R-64089 Red



R-66063 Blue



R-60011 Grey



R-68056 Green



R-66064 Navy Blue



R-60999 Black Graphite



R-60025 Graphite



R-61128 Beige

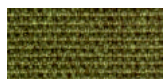


R-61130 Brown

#### Technical data:

<b>Material</b>	polyester 100%
<b>Fabric weight</b>	510 g/lm (16.45 oz/lin.yd.)
<b>Abrasion resistance rubs</b>	BS EN ISO 12947-2 70,000 Martindale cycles
<b>Pilling resistance</b>	scale 1-5, max 5, EN ISO 12945-2 (4-5)
<b>Colour fastness to light</b>	scale 1-8, max 8, EN ISO 105-B02 (5-7)
<b>Colour fastness to rubbing</b>	scale 1-5, max 5, EN ISO 105x12 (wet/dry) 4-5
<b>Acoustic test sound absorption</b>	ISO 354
<b>Flammability</b>	BS EN 1021-2 Match, CA TB 117-2013, BS EN 1021-1 (cigarette) Class Uno UNI 9175 Class 2, EMME

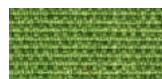
### Fabric Medley - second group



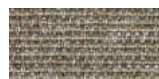
M-68005 Dark olive



M-68002 Light olive



M-68115 Green



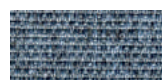
M-61002 Beige



M-67053 Navy blue



M-67006 Light blue



M-66008 Grey



M-64019 Red



M-63064 Pink



M-60999 Black

#### Technical data:

<b>Material</b>	polyester 100%
<b>Fabric weight</b>	510 g/lm (16.45 oz/lin.yd.)
<b>Abrasion resistance rubs</b>	BS EN ISO 12947-2, 75,000 cykli Martindale
<b>Pilling resistance</b>	scale 1-5, max. 5, EN ISO 12945-2 (4)
<b>Colour fastness to light</b>	scale 1-8, max. 8, EN ISO 105-B02 (5-7)
<b>Colour fastness to rubbing</b>	scale 1-5, max. 5, EN ISO 105x12 (wet/dry) (4-5/4-5)
<b>Acoustic test sound absorption</b>	ISO 354
<b>Flammability</b>	BS EN 1021-1 (cigarette) BS 476 Part 7, Class 2 Class Uno UNI 9174 - UNI 8457 CA TB 117-2013 ASTM E 84 Class I

### Fabric Atlantic \* - second price group



**Technical data:**

**Material** polyester 100%

**Fabric weight** 530 g/lm (17.09 oz/lin.yd.)

**Abrasion resistance rubs** BS EN ISO 12947-2, 110,000 Martindale cycles

**Pilling resistance** scale 1-5, max. 5, EN ISO 12945-2 (4-5)

**Colour fastness to light** scale 1-8, max. 8, EN ISO 105-B02 (5-7)

**Colour fastness to rubbing** scale 1-5, max. 5, EN ISO 105x12 (wet/dry (4-5/4-5))

**Flammability** CA TB 117-2013  
ASTM E 84 Class I  
BS EN 1021-2 (zapałka)  
BS EN 1021-1 (papieros)

### Fabric River - second group



**Technical data:**

**Material** polyester 100%

**Fabric weight** 300g/m2 (+/- 5%)

**Abrasion resistance rubs** 100,000 Martindale cycles (EN ISO 12947-1,2)

**Pilling resistance** EN ISO 12945-2 (5)

**Colour fastness to light** 4 (EN ISO 105-B02)

**Colour fastness to rubbing** dry: 4-5, wet: 3 (EN ISO 105-x12)

**Flammability** BS 5852: Part 1, Ignition Source 0 (cigarette)  
BS 5852: Part 1, Ignition Source 1 (match)  
EN1021 - 2

### Fabric Xtreme - third price group



**Technical data:**

**Material** 100% Trevira Clame (CS)  
100% Recykling (YS)  
Flame Retardant polyester.  
Non metallic dyestuffs.

**Fabric weight** 310 g/m2 ±5% (435g/lin.m ±5%)

**Abrasion resistance rubs** 60,000 Martindale cycles (CS)  
100,000 Martindale cycles (YS)

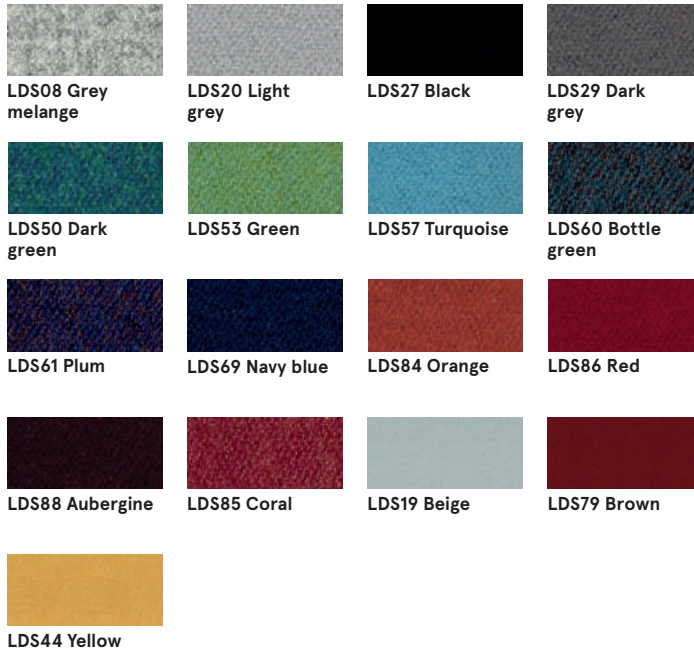
**Colour fastness to light** 6 (ISO 105 - B02)

**Colour fastness to rubbing** wet: 4, dry: 4 (ISO 105 - X12)

**Flammability** EN 1021 - 1 (cigarette),  
EN 1021 - 2 (match)  
BS 7176 Low Hazard,  
NF P92-507 M1, DIN 4102 B1,  
UNI 9175 Class 1 IM, UNI 8456,  
UNI 9174 & UNI 9177 Classe Uno,  
ÖNORM B 3825 & A 3800-1  
NF D 60-013

\* There is a possibility of ordering the product in full colour spectrum of Atlantic range, as per Gabriel's pattern book, within 8 weeks

### Fabric Synergy - third price group



**Technical data:**

**Material** 95% Virgin Wool, 5% Poliamid

**Fabric weight** 400g/m2 ±5% (560 g/lin.m ±5%)

**Abrasion resistance rubs** Independently certified  
≥100,000 Martindale cycles

**Colour fastness to light** 5 (ISO 105 - B02)

**Colour fastness to rubbing** ISO 105 - X12 - wet: 4, dry: 4

**Flammability** EN 1021 - 1 (cigarette, EN 1021 - 2 (match), BS 7176 Low Hazard, UNI 9175 Classe 1 IM, ÖNORM B 3825 & A 3800-1

### Fabric Atlas - fourth price group



**Technical data:**

**Material** 90% new wool, 10% nylon

**Fabric weight** 286g/m2, 400g/lm

**Abrasion resistance rubs** 100,000 cykli Martindale, EN ISO 12947

**Colour fastness to light** ISO 105 B02: 6-7

**Colour fastness to rubbing** ISO 105-X12:2001, (wet/dry) 4-5/4-5

**Flammability** BS EN 1021-2 Match, BS EN 1021-1 Cigarette, BS 5 5852 Crib 5, BS 5852 ignition source 3, BS 5852 Part 1, NF D 60 013, UNI 9175 1IM, US Cal. Bull. 117-2013

### Fabric Field2 - fourth price group



**Technical data:**

**Material** 100% Trevira CS

**Fabric weight** 321g/m2, 450g/lm

**Abrasion resistance rubs** 100,000 cykli Martindale, EN ISO 12947

**Colour fastness to light** ISO 105 B02: 5-7

**Flammability** BS EN 1021-2 Match, BS EN 1021-1 Cigarette, BS 5 5852 Crib 5, DIN 4102 B1 FAR 25.853, UNI 9177 classe 1, US Cal. Bull. 117-2013